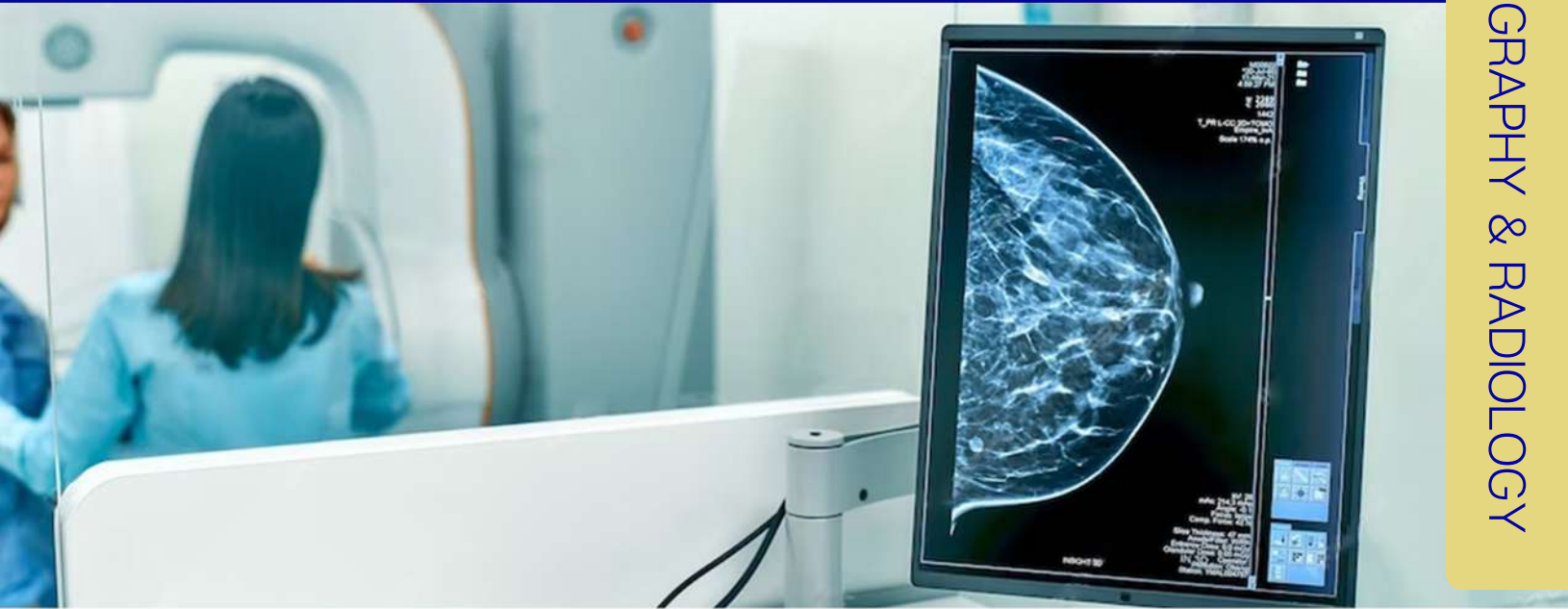




# UMD5-21B01

## 5 MP 21.3" Color Diagnostic Display

MAMMOGRAPHY & RADIOLOGY



Our monitor is meticulously designed for Radiology & Mammography. This high-definition display offers high brightness and resolution, ensuring detailed color and grayscale medical images for precise diagnosis. Its slim bezels make it a space-saving solution, while the LED backlight stabilization function ensures consistent image quality.

The human presence sensor adds an eco-friendly touch, making the UMD5-21B01 a perfect blend of precision, performance, and sustainability.

### FEATURES

- High brightness and resolution performs detailed color and grayscale medical images for precise diagnosis
- Compliant with DICOM 3.14 Part 14 GSDF
- Embedded self-calibration and quality assurance for Color and Gray scale
- High definition display with smooth gradation
- Anti-Reflective hard Glass for screen protection
- Slim bezels for space saving
- LED backlight stabilization function
- Human presence sensor for eco friendly

### WARRANTY

5 years extended warranty



900 Colorado ave S,  
Minneapolis, MN-55416.



contact@usei.com



763-546-8208 | 763-545-8206



## SPECIFICATIONS

| Panel Spec.                       |   |
|-----------------------------------|---|
| Panel type                        | TFT LCD   |
| Screen size (mm)                  | 21.3"   |
| Resolution                        | 2048 x 2560   |
| Brightness                        | 1150 cd/m <sup>2</sup> (Typical)  |
| DICOM calibrated brightness       | 500 cd/m <sup>2</sup>   |
| Viewable size H x V (mm)          | 337.92 x 422.4  |
| Pixel pitch (mm)                  | 0.165 x 0.165   |
| Bit Depth                         | 10 bit  |
| Viewing angle                     | 89° / 89° / 89° / 89°   |
| Contrast ratio                    | 2000:1 (Typical)  |
| Display color                     | 1.07G   |
| Response time(ms)                 | 25 (Tr + Tf)  |
|                                   |   |
| Features & functions              |   |
| Calibration                       | Embedded self-calibration (AcuCal® trade mark pending) with 12-Bit LUT  |
| Backlight stabilization           | Yes   |
| Ambient light compensation        | Yes   |
| Human presence sensor             | Yes   |
| Reading light                     | Yes   |
| Video signals                     |   |
| Input                             | DVI-D (Dual Link) x 1, DisplayPort x 1  |
| Output                            | DisplayPort x 1 (daisy chain)   |
| USB Ports                         |   |
| Function                          | USB 2.0 upstream (endpoint) x 1, USB 2.0 downstream x 2, USB (Service Only) x 1   |
| LAN port                          |   |
| Type                              | RJ45 10/100bps x 1  |
| Power supply                      |   |
| Power Input                       | AC 100V ~ 240V 50/60Hz  |
| Power consumption                 | 85W   |
| Power Management                  | VESA DPMS compatible (< 0.5W under stand-by mode)   |
| Physical specification            |   |
| Cabinet Color                     | Black RAL9004   |
| Cabinet Materials                 | Plastic   |
| Screen Protection                 | Anti-Reflective Hard Glass  |
| Mounting standard                 | VESA 100x100 mm   |
| Stand                             | Tilt, Swivel, Height adjustment, Pivot (Portrait/Landscape) function  |
| Net weight                        | 10.9 kgs  |
| Dimensions (W x H x D) - Portrait | 359.0 mm x 612.0 mm x 220.0 mm (with highest stand height)<br>359.0 mm x 482.0 mm x 220.0 mm (with lowest stand height) |
| General                           |   |
| Plug and Play                     | EDID  |
| Operating temperature             | 0°C ~ 35°C  |
| Optimal Operating temperature     | 10°C ~ 30°C   |
| Storage temperature               | -20°C ~ 60°C  |
| Accessory                         | User's manual, power cord, DisplayPort cable  |
| Certifications                    | FDA510k (pending), UL (ANSI/AAMI ES60601-1), CE (EN60601-1 ed3.1, EN60601-1-2 ed4), FCC Class B                         |
| Warranty                          | 5 Years   |