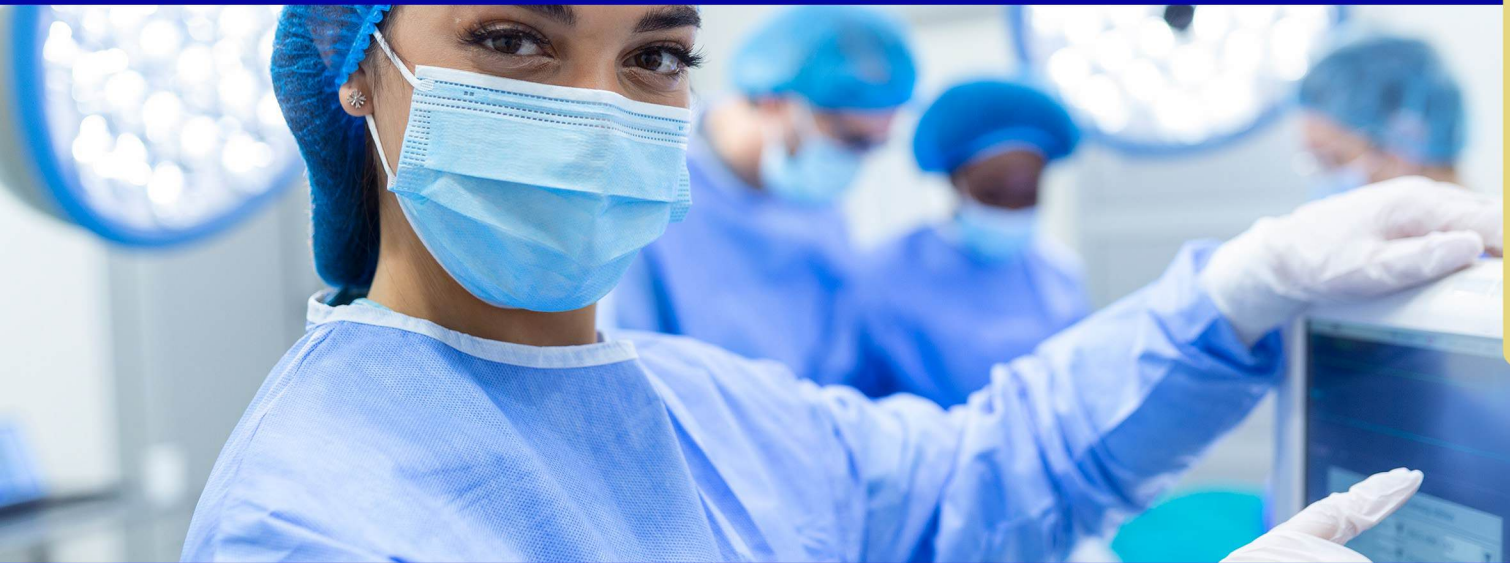


# UE2-24BXX Series 2.3 MP 24" Color Modality Display



Whether you require a bright, vivid display or a more subdued one, our LCD monitor delivers outstanding image quality and reliability for all your medical imaging needs.

## DIFFERENT VERSIONS OF 24" COLOR LCD MEDICAL MONITOR

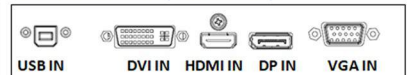


MODEL	PANEL	GLASS	3G-SDI
UE2-24B03 / UE2-24B03-HB	600/900 nits	AR Coating	N/A
UE2-24B23 / UE2-24B23-HB	600/900 nits	AG Touch	N/A
UE2-24B04 / UE2-24B04-HB	600/900 nits	AR Coating	YES
UE2-24B24 / UE2-24B24-HB	600/900 nits	AG Touch	YES

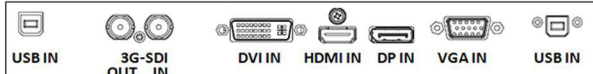
Standard with 3G-SDI signals (UE2-24B04)



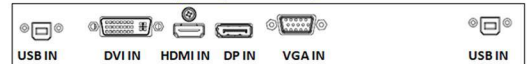
Standard Model (UE2-24B03)



Standard with 3G-SDI signals & touch panel (UE2-24B24)



Standard with touch panel (UE2-24B23)



## FEATURES:

Multiple Inputs to support variety of modality applications | Pre-set color calibration | Compliant with DICOM Part 14 | LED backlight stabilization function | Anti-Reflective hard Glass for screen protection | 3G-SDI looping video signal option available | PCT touch panel option available

**WARRANTY: 3 years extended warranty**

## SPECIFICATIONS

Model	UE2-24B03	UE2-24B03-HB
<b>Panel Spec.</b>		
Panel type	TFT LCD	TFT LCD
Screen size (mm)	24"	24"
Resolution	1920 x 1200	1920 x 1200
Brightness	600 cd/m <sup>2</sup> (Typical)	900 cd/m <sup>2</sup> (Typical)
DICOM calibrated brightness	300 cd/m <sup>2</sup>	450 cd/m <sup>2</sup>
Viewable size H x V(mm)	518.4 x 324.0	518.4 x 324.0
Pixel pitch (mm)	0.270 x 0.270	0.270 x 0.270
Bit Depth	10 bit	10 bit
Viewing angle	89 / 89 / 89 / 89	89 / 89 / 89 / 89
Contrast ratio	1000:1 (Typical)	1000:1 (Typical)
Display color	1.07G	1.07G
Response time(ms)	14 (Tr + Tf)	14 (Tr + Tf)
<b>Features &amp; functions</b>		
Backlight stabilization	Yes	
Pre-set color calibration	Yes	
<b>Video signals</b>		
Input	VGA x1, DVI-D (Dual Link) x 1, DisplayPort x 1, HDMI x 1	
<b>Optional</b>		
Video Input signal	3G-SDI x 1	
Video Output signal	3G-SDI x 1 (3G-SDI input loop-through)	
Touch panel	PCAP (Projected Capacitive) anti-glare touch glass with antibacterial treatment	
<b>USB Port</b>		
Function	USB (Service Only) x 1 ; USB (Touch Panel) x 1 (Optional)	
<b>Power supply</b>		
Power Input	AC 100V ~ 240V 50/60Hz	
Power consumption	22W	35W
Power Management	VESA DPMS compatible (< 1W under stand-by mode)	
<b>Physical specification</b>		
Cabinet Color	White RAL9003	
Cabinet Materials	Plastic	
Screen Protection	Anti-Reflective Hard Glass	
Mounting standard	VESA 100x100 mm	
Net weight	6.45 kgs (without touch panel) / 7.15 kgs (with touch panel)	
Dimensions (W x H x D )	558.8mm x 364.3mm x 60mm	
<b>General</b>		
Plug and Play	EDID	
Operating temperature	0°C ~ 35°C	
Storage temperature	-20°C ~ 60°C	
Accessory	User's manual, power cord, DisplayPort cable	
Certifications	UL (ANSI/AAMI ES60601-1), CE (EN60601-1 ed3.1, EN60601-1-2 ed4), FCC Class B	
Warranty	3 Years	

